



PIRANHA®

HOSE PRODUCTS, INC.

A Kuriyama Group Company

"The Only Name in Sewer Cleaning"



Kuriyama of America, Inc.

Visit us
www.kuriyama.com
on the Web!



EDITION 1207



Page 3

Applications, Temperature, Construction, Features & Advantages and Lengths

Page 4

High Pressure Sewer Cleaning Hoses
2,500 PSI Series SPOR
3,000 PSI Series LLBU & HPBU

Page 5

Slither® High Pressure Sewer Cleaning Hoses
2,500 PSI Series SLSPOR
3,000 PSI Series SLSPOR

Page 6

Jetting/Lateral Line Hoses
4,000 PSI Series LLGR
4,000 PSI Series High Burst SHBK, LHBK
5,000 PSI Series LLRD

Page 7

Slither® Jetting/Lateral Line Hoses
4,000 PSI Series SLGR
4,000 PSI High Burst Series SLSHBK, SLLHBK
5,000 PSI Series SLRD

Page 8

Armor Belt® Applications, Temperature, Construction, Features & Advantages and Lengths

Page 9

Armor Belt® Sewer Cleaning Hoses
2,500 PSI Series SAOR
3,000 PSI Series HABU
4,000 PSI Series LAGR

Page 10

Piranha "Ready-To-Go" Stock Length Hose Assemblies

Page 11

Standard & Custom Assembly / Ordering Instructions

Page 12

Fittings and Accessories for Piranha Hoses

Page 13

Fittings and Accessories for Piranha Hoses & Swaging Equipment

Page 14

Crimping Equipment

Page 15

Cautionary Statement and Limited Warranty

Back

Find Piranha Hose Sewer Cleaning Products in your area

THE TRADEMARKS CONTAINED IN THIS PUBLICATION ARE TRADEMARKS OF KURIYAMA OF AMERICA, INC.



Sewer & Jetting/Lateral Line Hoses

Applications, Temperature, Construction, Features & Advantages and Lengths

Applications:

- **High Pressure Sewer Cleaning** - Applications for commercial, industrial and residential.
- **Tight Pipe Bends** - Slick, Slither® cover affords an easier handling hose to get the job done.
- **Jetting/Lateral Line** - Used for jetting equipment.

Temperature:

- **Hose Temperature Range** - For the diameters of 1/2", 5/8", 3/4", 1", 1 1/4" and 1 1/2" is -40°F (-40°C) to +150°F (+66°C).
- **Hose Temperature Range** - For the diameters of 1/8", 3/16", 1/4" and 3/8" is -40°F (-40°C) to +160°F (+71°C).



Construction:

- **Inner Tube** - Yellow Polyolefin. (Sewer Cleaning Hoses, 2,500 & 3,000 PSI) Yellow seamless thermoplastic. (Jetting/Lateral Line Hoses, 4,000 & 5,000 PSI)
- **Reinforcement** - High tensile one or two synthetic fiber braids.
- **Cover** - Abrasion resistant polyether-urethane. (Standard)
- **Slither®** - Polyether-urethane low coefficient of friction. (Optional)

Features & Advantages:

- **Materials** - Constructed to provide rugged and reliable service under the most severe and demanding conditions.
- **Yellow Color Tube** - Assures the user that they are using a WASTEC designated Piranha Hose Product.
- **Polyolefin or Seamless Thermoplastic Tube** - Provides maximum resistance to hydrolysis.
- **High Tensile One or Two Synthetic Fiber Braids** - Contributes to low volumetric expansion and eliminates loss of strength from moisture absorption.
- **Abrasion Resistant Polyether-Urethane** - Polyurethane cover provides exceptional cut, abrasion and fungus resistance.
- **Slither® Cover** - Cover is ultra slippery; allows hose to maneuver around and through difficult sewer bends.
- **Pressure Testing** - All Piranha factory-assembled hoses are 100% pressure tested.
- **Reel Installation** - Ideal for truck and trailer mounts.

Industry Standards:

- **Orange Cover** = 2,500 PSI
- **Blue Cover** = 3,000 PSI
- **Green Cover** = 4,000 PSI
- **Black Cover** = 4,000 PSI (High Burst)
- **Red Cover** = 5,000 PSI

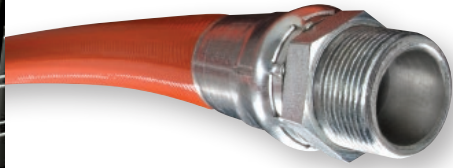
Lengths:

- **Stock Lengths** - 400, 500, and 600 foot rolls.
- **Custom Lengths** - Available and made to order.
- **Jetting/Lateral Lines** - Available for bulk and/or assemblies.





Sewer Cleaning Hose



2,500 PSI
Series - SPOR



A yellow polyolefin tube, single high tensile synthetic fiber braid reinforcement and abrasion resistant orange polyether-urethane cover.

NOMINAL SPECIFICATIONS

SERIES NUMBER	NOMINAL I.D.		NOMINAL O.D.		MAX. OPERATING PRESSURE		MIN. BURST PRESSURE		MIN. BEND RADIUS		Weight LBS/FT
	INCHES	MM	INCHES	MM	PSI	BAR	PSI	BAR	INCHES	MM	
SPOR-10	5/8	16.0	0.96	24.4	2,500	172.4	6,250	430.9	4.00	101.6	0.19
SPOR-12	3/4	19.1	1.18	30.0	2,500	172.4	6,250	430.9	5.00	127.0	0.28
SPOR-16	1	25.4	1.46	37.1	2,500	172.4	6,250	430.9	6.00	152.4	0.40
SPOR-20	1-1/4	32.0	1.80	45.7	2,500	172.4	6,250	430.9	8.00	203.2	0.59
SPOR-24	1-1/2	38.1	2.18	55.4	2,500	172.4	6,250	430.9	15.00	381.0	0.94

MADE IN USA



3,000 PSI
Series - LLBU, HPBU



A yellow polyolefin tube, double high tensile synthetic fiber braid reinforcement and abrasion resistant blue polyether-urethane cover.

NOMINAL SPECIFICATIONS

SERIES NUMBER	NOMINAL I.D.		NOMINAL O.D.		MAX. OPERATING PRESSURE		MIN. BURST PRESSURE		MIN. BEND RADIUS		Weight LBS/FT
	INCHES	MM	INCHES	MM	PSI	BAR	PSI	BAR	INCHES	MM	
LLBU-08	1/2	12.8	0.83	21.2	3,000	206.8	7,500	517.1	4.00	101.6	0.16
HPBU-12	3/4	19.1	1.18	30.0	3,000	206.8	7,500	517.1	5.00	127.0	0.29
HPBU-16	1	25.4	1.48	37.6	3,000	206.8	7,500	517.1	8.00	203.2	0.41

MADE IN USA



FOR AVAILABILITY OF PRODUCTS AND SIZES SHOWN, PLEASE REFER TO THE BACK PAGE FOR YOUR NEAREST STOCKING LOCATION. BECAUSE WE CONTINUALLY EXAMINE WAYS TO IMPROVE OUR PRODUCTS, WE RESERVE THE RIGHT TO ALTER SPECIFICATIONS OR DISCONTINUE PRODUCTS WITHOUT PRIOR NOTICE.



Slither[®] Sewer Cleaning Hose



SLITHER[®] 2,500 PSI Series - SLSPOR



A yellow polyolefin tube, single high tensile synthetic fiber braid reinforcement and abrasion resistant **slick** orange polyether-urethane cover.

NOMINAL SPECIFICATIONS

SERIES NUMBER	NOMINAL I.D.		NOMINAL O.D.		MAX. OPERATING PRESSURE		MIN. BURST PRESSURE		MIN. BEND RADIUS		Weight LBS/FT
	INCHES	MM	INCHES	MM	PSI	BAR	PSI	BAR	INCHES	MM	
SLSPOR-10	5/8	16.0	0.96	24.4	2,500	172.4	6,250	430.9	4.00	101.6	0.19
SLSPOR-12	3/4	19.1	1.18	30.0	2,500	172.4	6,250	430.9	5.00	127.0	0.28
SLSPOR-16	1	25.4	1.46	37.1	2,500	172.4	6,250	430.9	6.00	152.4	0.40
SLSPOR-20	1-1/4	32.0	1.80	45.7	2,500	172.4	6,250	430.9	8.00	203.2	0.59
SLSPOR-24	1-1/2	38.1	2.18	55.4	2,500	172.4	6,250	430.9	15.00	381.0	0.94

MADE IN USA



SLITHER[®] 3,000 PSI Series - SLBU, SLHPBU



A yellow polyolefin tube, double high tensile synthetic fiber braid reinforcement and abrasion resistant **slick** blue polyether-urethane cover.

NOMINAL SPECIFICATIONS

SERIES NUMBER	NOMINAL I.D.		NOMINAL O.D.		MAX. OPERATING PRESSURE		MIN. BURST PRESSURE		MIN. BEND RADIUS		Weight LBS/FT
	INCHES	MM	INCHES	MM	PSI	BAR	PSI	BAR	INCHES	MM	
SLBU-08	1/2	12.8	0.83	21.2	3,000	206.8	7,500	517.1	4.00	101.6	0.16
SLHPBU-12	3/4	19.1	1.18	30.0	3,000	206.8	7,500	517.1	5.00	127.0	0.29
SLHPBU-16	1	25.4	1.48	37.6	3,000	206.8	7,500	517.1	8.00	203.2	0.41

MADE IN USA



FOR AVAILABILITY OF PRODUCTS AND SIZES SHOWN, PLEASE REFER TO THE BACK PAGE FOR YOUR NEAREST STOCKING LOCATION.
BECAUSE WE CONTINUALLY EXAMINE WAYS TO IMPROVE OUR PRODUCTS, WE RESERVE THE RIGHT TO ALTER SPECIFICATIONS OR DISCONTINUE PRODUCTS WITHOUT PRIOR NOTICE.





Jetting/Lateral Line Hose



4,000 PSI
Series - LLGR



A yellow seamless thermoplastic tube, double high tensile synthetic fiber braid reinforcement and abrasion resistant green polyether-urethane cover.

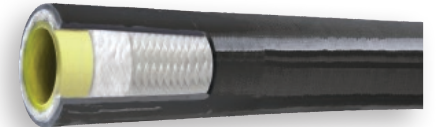
NOMINAL SPECIFICATIONS

SERIES NUMBER	NOMINAL I.D.		NOMINAL O.D.		MAX. OPERATING PRESSURE		MIN. BURST PRESSURE		MIN. BEND RADIUS		Weight LBS/FT
	INCHES	MM	INCHES	MM	PSI	BAR	PSI	BAR	INCHES	MM	
LLGR-02	1/8	3.6	0.32	8.2	4,000	275.8	10,000	689.5	1.25	31.2	0.04
LLGR-03	3/16	4.8	0.41	10.5	4,000	275.8	10,000	689.5	1.75	44.5	0.05
LLGR-04	1/4	6.4	0.50	12.6	4,000	275.8	10,000	689.5	2.50	63.5	0.06
LLGR-06	3/8	9.7	0.65	16.5	4,000	275.8	10,000	689.5	3.00	76.2	0.11
LLGR-08	1/2	12.8	0.83	21.2	4,000	275.8	10,000	689.5	4.00	101.6	0.16

MADE IN USA



HIGH BURST
4,000 PSI
Series - SHBK, LHBK



A yellow seamless thermoplastic tube, double high tensile synthetic fiber braid reinforcement and abrasion resistant black polyether-urethane cover.

NOMINAL SPECIFICATIONS

SERIES NUMBER	NOMINAL I.D.		NOMINAL O.D.		MAX. OPERATING PRESSURE		MIN. BURST PRESSURE		MIN. BEND RADIUS		Weight LBS/FT
	INCHES	MM	INCHES	MM	PSI	BAR	PSI	BAR	INCHES	MM	
SHBK-08	1/2	12.7	0.87	22.1	4,000	275.8	12,000	827.4	3.00	76.2	0.20
SHBK-10	5/8	15.9	0.91	23.0	4,000	275.8	12,000	827.4	4.00	101.6	0.16
LHBK-08	1/2	12.7	0.80	20.3	4,000	275.8	16,000	1103.2	4.00	101.6	0.15

Note: Series LHBK-08 and SHBK-10 have a single high tensile synthetic fiber braid.

MADE IN USA



5,000 PSI
Series - LLRD



A yellow seamless thermoplastic tube, double high tensile synthetic fiber braid reinforcement and abrasion resistant red polyether-urethane cover.

NOMINAL SPECIFICATIONS

SERIES NUMBER	NOMINAL I.D.		NOMINAL O.D.		MAX. OPERATING PRESSURE		MIN. BURST PRESSURE		MIN. BEND RADIUS		Weight LBS/FT
	INCHES	MM	INCHES	MM	PSI	BAR	PSI	BAR	INCHES	MM	
LLRD-04	1/4	6.4	0.50	12.6	5,000	344.7	12,500	861.8	2.50	63.5	0.05
LLRD-06	3/8	9.7	0.65	16.5	5,000	344.7	12,500	861.8	3.00	76.2	0.13
LLRD-08	1/2	12.8	0.80	20.2	5,000	344.7	12,500	861.8	4.00	101.6	0.13

Note: Series LLRD-08 has a single high tensile synthetic fiber braid.

MADE IN USA



FOR AVAILABILITY OF PRODUCTS AND SIZES SHOWN, PLEASE REFER TO THE BACK PAGE FOR YOUR NEAREST STOCKING LOCATION.
BECAUSE WE CONTINUALLY EXAMINE WAYS TO IMPROVE OUR PRODUCTS, WE RESERVE THE RIGHT TO ALTER SPECIFICATIONS OR DISCONTINUE PRODUCTS WITHOUT PRIOR NOTICE.



Slither® Jetting/Lateral Line Hose



SLITHER® 4,000 PSI Series - SLGR



A yellow seamless thermoplastic tube, double high tensile synthetic fiber braid reinforcement and abrasion resistant slick green polyether-urethane cover.

NOMINAL SPECIFICATIONS

SERIES NUMBER	NOMINAL I.D.		NOMINAL O.D.		MAX. OPERATING PRESSURE		MIN. BURST PRESSURE		MIN. BEND RADIUS		Weight LBS/FT
	INCHES	MM	INCHES	MM	PSI	BAR	PSI	BAR	INCHES	MM	
SLGR-02	1/8	3.6	0.32	8.2	4,000	275.8	10,000	689.5	1.25	31.2	0.04
SLGR-03	3/16	4.8	0.41	10.5	4,000	275.8	10,000	689.5	1.75	44.5	0.05
SLGR-04	1/4	6.4	0.50	12.6	4,000	275.8	10,000	689.5	2.50	63.5	0.06
SLGR-06	3/8	9.7	0.65	16.5	4,000	275.8	10,000	689.5	3.00	76.2	0.11
SLGR-08	1/2	12.8	0.83	21.2	4,000	275.8	10,000	689.5	4.00	101.6	0.16

MADE IN USA



SLITHER® HIGH BURST

4,000 PSI Series - SLSHBK, SLLHBK



A yellow seamless thermoplastic tube, double high tensile synthetic fiber braid reinforcement and abrasion resistant slick black polyether-urethane cover.

NOMINAL SPECIFICATIONS

SERIES NUMBER	NOMINAL I.D.		NOMINAL O.D.		MAX. OPERATING PRESSURE		MIN. BURST PRESSURE		MIN. BEND RADIUS		Weight LBS/FT
	INCHES	MM	INCHES	MM	PSI	BAR	PSI	BAR	INCHES	MM	
SLSHBK-08	1/2	12.7	0.87	22.1	4,000	275.8	12,000	827.4	3.00	76.2	0.20
SLSHBK-10	5/8	15.9	0.91	23.0	4,000	275.8	12,000	827.4	4.00	101.6	0.16
SLLHBK-08	1/2	12.7	0.80	20.3	4,000	275.8	16,000	1,103.2	4.00	101.6	0.15

Note: Series SLLHBK-08 and SLSHBK-10 have a single high tensile synthetic fiber braid.

MADE IN USA



SLITHER® 5,000 PSI Series - SLRD



A yellow seamless thermoplastic tube, double high tensile synthetic fiber braid reinforcement and abrasion resistant slick red polyether-urethane cover.

NOMINAL SPECIFICATIONS

SERIES NUMBER	NOMINAL I.D.		NOMINAL O.D.		MAX. OPERATING PRESSURE		MIN. BURST PRESSURE		MIN. BEND RADIUS		Weight LBS/FT
	INCHES	MM	INCHES	MM	PSI	BAR	PSI	BAR	INCHES	MM	
SLRD-04	1/4	6.4	0.50	12.6	5,000	344.7	12,500	861.8	2.50	63.5	0.05
SLRD-06	3/8	9.7	0.65	16.5	5,000	344.7	12,500	861.8	3.00	76.2	0.13
SLRD-08	1/2	12.8	0.80	20.2	5,000	344.7	12,500	861.8	4.00	101.6	0.13

Note: Series SLRD-08 has a single high tensile synthetic fiber braid.

MADE IN USA

FOR AVAILABILITY OF PRODUCTS AND SIZES SHOWN, PLEASE REFER TO THE BACK PAGE FOR YOUR NEAREST STOCKING LOCATION.

BECAUSE WE CONTINUALLY EXAMINE WAYS TO IMPROVE OUR PRODUCTS, WE RESERVE THE RIGHT TO ALTER SPECIFICATIONS OR DISCONTINUE PRODUCTS WITHOUT PRIOR NOTICE.





Armor Belt® Hose

Applications, Temperature, Construction, Features & Advantages and Lengths

Armor Belt® Sewer Cleaning Hose by Piranha® Hose Products, Inc. features an innovative process that adds value to your sewer hose purchase by adding life to the hose. Armor Belt® hose is a must when the application calls for extreme durability while maintaining flexibility. It also improves cut and abrasion resistance. It's the ideal hose for the demanding and harsh environment of sewer cleaning.

Applications:

- **Harsh Environments** - Demanding sewer cleaning environments requiring additional abrasion resistance.
- **High Pressure/Abrasion** - High pressure sewer cleaning applications.

Temperature:

Armor Belt® Service Temperature Range: -40°F (-40°C) to +150°F (+66°C)

Construction:

- **Inner Tube Material** - Yellow polyolefin.
- **Reinforcement** - High tensile one or two synthetic fiber braids.
- **Polymer Belting** - Protects reinforcement.
- **Cover Material** - Abrasion resistant polyether-urethane, perforated bonded construction - materials are chemically bonded together.
Slither® Cover Version - Polyether-urethane low coefficient of friction. (Optional)

Features & Advantages:

- **Patented Armor Belt Construction** - Increases hose abrasion and cut resistance for longer service life. Greatly increased crush resistance. Provides rugged and reliable service.
- **Polyolefin Tube** - Provides maximum resistance to hydrolysis.
- **High Tensile Synthetic Fiber Reinforcement** - Contributes to low volumetric expansion and eliminates loss of strength from moisture absorption.
- **Polyether-Urethane Cover** - Provides fungus resistance.
- **Unique Construction** - All hose components are chemically bonded to maximize hose service life.
- **Optional Slither® Ultra Slick Cover** - Design is also available; check with factory for details.
- **Factory Assemblies** - All Piranha factory-assembled hoses are 100% pressure tested.
- **Reel Installation** - Ideal for truck and trailer mounted reels.

Industry Standards:

- **Orange Cover = 2,500 PSI**
- **Blue Cover = 3,000 PSI**
- **Green Cover = 4,000 PSI**

Lengths:

- **Standard Lengths** - 400, 500, and 600 foot rolls.
- **Custom Lengths** - Available and made to order.





Armor Belt®

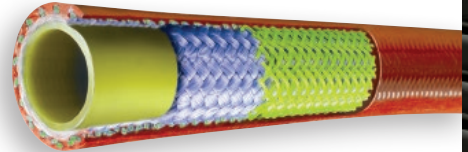
The Toughest Hose in the Market

- Lightweight • Extremely durable against normal wear and tear • Highly abrasive resistant
- Excellent cut resistance • Greatly increased crush resistance • Designed to be tougher and last longer



2,500 PSI

Series - SAOR



A yellow polyolefin tube, single high tensile synthetic fiber braid reinforcement, rugged polymer belting and abrasion resistant orange polyether-urethane cover.

NOMINAL SPECIFICATIONS

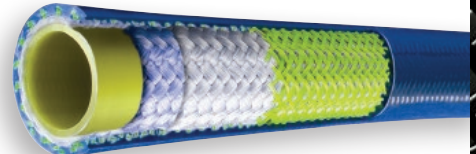
SERIES NUMBER	NOMINAL I.D.		NOMINAL O.D.		MAX. OPERATING PRESSURE		MIN. BURST PRESSURE		MIN. BEND RADIUS		Weight LBS/FT
	INCHES	MM	INCHES	MM	PSI	BAR	PSI	BAR	INCHES	MM	
SAOR-10	5/8	15.9	1.10	27.9	2,500	172.4	6,250	430.9	4.00	101.6	0.31
SAOR-12	3/4	19.1	1.31	33.3	2,500	172.4	6,250	430.9	5.00	127.0	0.36
SAOR-16	1	25.4	1.55	39.4	2,500	172.4	6,250	430.9	6.00	152.4	0.50
SAOR-20	1-1/4	31.8	1.87	47.5	2,500	172.4	6,250	430.9	7.00	177.8	0.66

MADE IN USA



3,000 PSI

Series - HABU



A yellow polyolefin tube, double high tensile fiber braid reinforcement, rugged polymer belting and abrasion resistant blue polyether-urethane cover.

NOMINAL SPECIFICATIONS

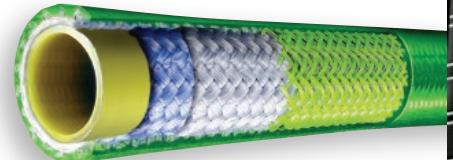
SERIES NUMBER	NOMINAL I.D.		NOMINAL O.D.		MAX. OPERATING PRESSURE		MIN. BURST PRESSURE		MIN. BEND RADIUS		Weight LBS/FT
	INCHES	MM	INCHES	MM	PSI	BAR	PSI	BAR	INCHES	MM	
HABU-12	3/4	19.4	1.32	33.5	3,000	206.8	7,500	517.1	5.00	127.0	0.39
HABU-16	1	25.4	1.56	39.6	3,000	206.8	7,500	517.1	8.00	203.2	0.53

MADE IN USA



4,000 PSI

Series - LAGR



A yellow polyolefin tube, double high tensile synthetic fiber braid reinforcement, rugged polymer belting and abrasion resistant green polyether-urethane cover.

NOMINAL SPECIFICATIONS

SERIES NUMBER	NOMINAL I.D.		NOMINAL O.D.		MAX. OPERATING PRESSURE		MIN. BURST PRESSURE		MIN. BEND RADIUS		Weight LBS/FT
	INCHES	MM	INCHES	MM	PSI	BAR	PSI	BAR	INCHES	MM	
LAGR-08	1/2	12.7	1.00	25.4	4,000	275.8	10,000	689.5	3.00	76.2	0.19

MADE IN USA

FOR AVAILABILITY OF PRODUCTS AND SIZES SHOWN, PLEASE REFER TO THE BACK PAGE FOR YOUR NEAREST STOCKING LOCATION.
BECAUSE WE CONTINUALLY EXAMINE WAYS TO IMPROVE OUR PRODUCTS, WE RESERVE THE RIGHT TO ALTER SPECIFICATIONS OR DISCONTINUE PRODUCTS WITHOUT PRIOR NOTICE.

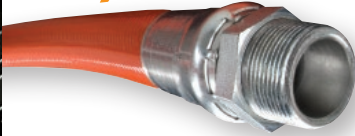




Piranha® "Ready-To-Go" Stock Length Hose Assemblies

If you don't see what you need, please refer to page 11 for your "Made-To-Order" assembly length ordering instructions.

2,500 PSI



3,000 PSI



4,000 PSI



4,000 PSI



5,000 PSI



SERIES SPOR - ORANGE COVER

MADE IN USA

PART NUMBER	SIZE CODE	HOSE I.D. (INCHES)	MALE NPTF NOM. THREAD SIZE	WORKING PRESSURE (MAX PSI)	ASSEMBLED LENGTH FT.	WT. PER PKG. (LBS.)
SPOR-MM12X400	12	3/4	3/4 - 14	2,500	400	112
SPOR-MM12X500	12	3/4	3/4 - 14	2,500	500	140
SPOR-MM12X600	12	3/4	3/4 - 14	2,500	600	168
SPOR-MM16X400	16	1	1-11 1/2	2,500	400	160
SPOR-MM16X500	16	1	1-11 1/2	2,500	500	200
SPOR-MM16X600	16	1	1-11 1/2	2,500	600	240
SPOR-MM16X800	16	1	1-11 1/2	2,500	800	320
SPOR-MM20X600	20	1 1/4	1 1/4 - 11 1/2	2,500	600	354

SERIES SLSPOR - ORANGE COVER **NEW!**

MADE IN USA

PART NUMBER	SIZE CODE	HOSE I.D. (INCHES)	MALE NPTF NOM. THREAD SIZE	WORKING PRESSURE (MAX PSI)	ASSEMBLED LENGTH FT.	WT. PER PKG. (LBS.)
SLSPOR-MM12X400	12	3/4"	3/4 - 14	2500	400	112
SLSPOR-MM12X500	12	3/4"	3/4 - 14	2500	500	140
SLSPOR-MM16X400	16	1"	1 - 11 1/2	2500	400	160
SLSPOR-MM16X500	16	1"	1 - 11 1/2	2500	500	200
SLSPOR-MM20X500	20	1 1/4"	1 1/4 - 11 1/2	2500	500	295

SERIES HPBU - BLUE COVER

MADE IN USA

PART NUMBER	SIZE CODE	HOSE I.D. (INCHES)	MALE NPTF NOM. THREAD SIZE	WORKING PRESSURE (MAX PSI)	ASSEMBLED LENGTH FT.	WT. PER PKG. (LBS.)
HPBU-MM12X400	12	3/4	3/4 - 14	3,000	400	116
HPBU-MM12X500	12	3/4	3/4 - 14	3,000	500	145
HPBU-MM12X600	12	3/4	3/4 - 14	3,000	600	174
HPBU-MM16X500	16	1	1-11 1/2	3,000	500	205
HPBU-MM16X600	16	1	1-11 1/2	3,000	600	246
HPBU-MM16X800	16	1	1-11 1/2	3,000	800	328

SERIES LLGR - GREEN COVER **NEW!**

MADE IN USA

PART NUMBER	SIZE CODE	HOSE I.D. (INCHES)	MALE NPTF NOM. THREAD SIZE	WORKING PRESSURE (MAX PSI)	ASSEMBLED LENGTH FT.	WT. PER PKG. (LBS.)
LLGR-MM02X100	02	1/8"	1/8 - 27	4000	100	4
LLGR-MM04X100	04	1/4"	1/4 - 18	4000	100	6
LLGR-MM04X200	04	1/4"	1/4 - 18	4000	200	12
LLGR-MM06X100	06	3/8"	3/8 - 18	4000	100	11
LLGR-MM06X150	06	3/8"	3/8 - 18	4000	150	15
LLGR-MM06X200	06	3/8"	3/8 - 18	4000	200	22
LLGR-MM06X250	06	3/8"	3/8 - 18	4000	250	28
LLGR-MM06X300	06	3/8"	3/8 - 18	4000	300	33
LLGR-MM08X100	08	1/2"	1/2 - 14	4000	100	16
LLGR-MM08X500	08	1/2"	1/2 - 14	4000	500	80
LLGR-MM08X600	08	1/2"	1/2 - 14	4000	600	96
LLGR-MS06X100	06	3/8"	3/8 - 18	4000	100	11
LLGR-MS06X200	06	3/8"	3/8 - 18	4000	200	22
LLGR-MS06X300	06	3/8"	3/8 - 18	4000	300	33
SLGR-MM06X250	06	3/8"	3/8 - 18	4000	250	28

SERIES SHBK - BLACK COVER

MADE IN USA

PART NUMBER	SIZE CODE	HOSE I.D. (INCHES)	MALE NPTF NOM. THREAD SIZE	WORKING PRESSURE (MAX PSI)	ASSEMBLED LENGTH FT.	WT. PER PKG. (LBS.)
SHBK-MM08X400	08	1/2	1/2 - 14	4,000	400	76
SHBK-MM08X500	08	1/2	1/2 - 14	4,000	500	95
SHBK-MM08X600	08	1/2	1/2 - 14	4,000	600	114

SERIES LLRD - RED COVER **NEW!**

MADE IN USA

PART NUMBER	SIZE CODE	HOSE I.D. (INCHES)	MALE NPTF NOM. THREAD SIZE	WORKING PRESSURE (MAX PSI)	ASSEMBLED LENGTH FT.	WT. PER PKG. (LBS.)
LLRD-MM04X100	04	1/4"	1/4 - 18	5000	100	6
LLRD-MM04X150	04	1/4"	1/4 - 18	5000	200	8
LLRD-MM04X200	04	1/4"	1/4 - 18	5000	200	12
LLRD-MM06X300	06	3/8"	3/8 - 18	5000	300	39
LLRD-MM08X500	08	1/2"	1/2 - 14	5000	500	65
LLRD-MM08X600	08	1/2"	1/2 - 14	5000	600	78



Fittings & Accessories for Piranha Hoses

End fittings and menders for thermoplastic hose are not interchangeable. It is essential that hose, end fittings, menders and tooling are properly matched. Identification of Piranha Hose Products is simple. The inner tube of all Piranha sewer cleaning hose is yellow, as assigned by WASTEC (Waste Equipment Technology Association) to the manufacturer's identification code. To assure proper matching of all components, the hose tube material, end fittings, menders and tooling should be purchased directly from Piranha Hose Products, Inc.



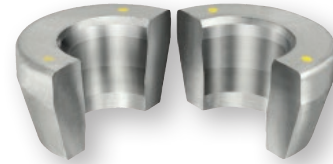
FEMALE FITTINGS

PART NO.	USE WITH HOSE SERIES	WEIGHT
F08FS8	LLBU, SLBU, LLGR, SLGR, LHBK, SLLHBK-08	.29 LBS
F12FS12	SPOR, SLSPOR, HPBU, SLHPBU-12	.52 LBS
F16FS16	SPOR, SLSPOR, HPBU, SLHPBU-16	.81 LBS
FAR08FS8	LAGR-08	.38 LBS
FAR12FS12	SAOR, HABU-12	.60 LBS
FAR16FS16	SAOR, HABU-16	.90 LBS
FHP08FS8	SHBK, SLSHBK-08	.32 LBS



MALE FITTINGS

PART NO.	USE WITH HOSE SERIES	WEIGHT
F06NPT6	LLGR, SLGR-06	.17 LBS
F08NPT8	LLBU, SLBU, LLGR, SLGR, LLRD, SLRD, LHBK, SLLHBK-08	.36 LBS
F10NPT8	SPOR, SLSPOR-10	.36 LBS
F12NPT12	SPOR, SLSPOR, HPBU, SLHPBU-12	.43 LBS
F16NPT16	SPOR, SLSPOR, HPBU, SLHPBU-16	.71 LBS
F20NPT20	SPOR, SLSPOR-20	1.00 LBS
F24NPT24	SPOR, SLSPOR-24	2.52 LBS
FAR08NPT8	LAGR-08	.34 LBS
FAR10NPT8	SAOR-10	.42 LBS
FAR12NPT12	SAOR, HABU-12	.49 LBS
FAR16NPT16	SAOR, HABU-16	.79 LBS
FAR20NPT20	SAOR-20	1.03 LBS
FHP08NPT8	SHBK, SLSHBK-08	.28 LBS
FHP10NPT8	SHBK, SLSHBK-10	.34 LBS



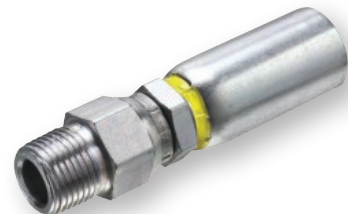
DIES

PART NO.	USE WITH HOSE SERIES	WEIGHT
DS06	LLGR, SLGR-06	2.29 LBS
DS08	LLBU, SLBU, LLGR, SLGR, LHBK, SLLHBK-08	2.19 LBS
DS085	LLRD, SLRD-08	2.20 LBS
DS10	SPOR, SLSPOR-10	1.87 LBS
DS12	SPOR, SLSPOR, HPBU, SLHPBU-12	1.99 LBS
DS16	SPOR, SLSPOR, HPBU, SLHPBU-16	1.74 LBS
DS20	SPOR, SLSPOR-20	1.39 LBS
DSAR08	LAGR-08	2.13 LBS
DSAR12	SAOR, HABU-12	1.9 LBS
DSAR10	SAOR-10	1.97 LBS
DSAR16	SAOR, HABU-16	1.63 LBS
DSAR20	SAOR-20	1.21 LBS
DSHP08	SHBK, SLSHBK-08	2.15 LBS
DSHP10	SHBK, SLSHBK-10	2.18 LBS



FEMALE ADAPTER FITTINGS

PART NO.	USE WITH HOSE SERIES	WEIGHT
A06FPX06FS	LLGR, SLGR-06	.16 LBS
A08FPX08FS	LLBU, SLBU, LLGR, SLGR, LLRD, SLRD, SHBK, SLSHBK, LHBK, SLLHBK, LAGR-08 & SPOR, SLSPOR, SHBK, SLSHBK, SAOR-10	.21 LBS
A12FPX12FS	SPOR, SLSPOR, HPBU, SLHPBU-12	.34 LBS



MALE SWIVEL FITTING

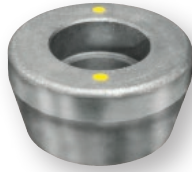
PART NO.	USE WITH HOSE SERIES	WEIGHT
F06MSNPT6	LLGR, SLGR-06	.21 LBS





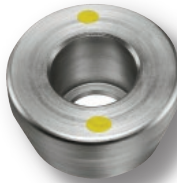
Fittings & Accessories for Piranha Hoses & Swaging Equipment

MALE PUSHERS



PART NO.	USE WITH HOSE SERIES	WEIGHT
DPT06	LLGR, SLGR-06	2.33 LBS
DPT08	LLBU, SLBU, LLGR, SLGR, LLD, SLRD, LHBK, SLLHBK, SHBK, SLSHBK-08 & SHBK, SLSHBK, SPOR, SLSPOR-10	2.23 LBS
DPT12	SPOR, SLSPOR, HPBU, SLHPBU-12	2.11 LBS
DPT16	SPOR, SLSPOR, HPBU, SLHPBU-16	1.81 LBS
DPT20	SPOR, SLSPOR-20	1.66 LBS
DPTAR08	LAGR-08	2.19 LBS
DPTAR10	SAOR-10	2.19 LBS
DPTAR12	SAOR, HABU-12	2.07 LBS
DPTAR16	SAOR, HABU-16	1.77 LBS
DPTAR20	SAOR-20	1.39 LBS

FEMALE PUSHERS



PART NO.	USE WITH HOSE SERIES	WEIGHT
DPT08FS	LLBU, SLBU, LLGR, SLGR, LHBK, SLLHBK, SHBK, SLSHBK-08	2.18 LBS
DPT12FS	SPOR, SLSPOR, HPBU, SLHPBU-12	1.87 LBS
DPT16FS	SPOR, SLSPOR, HPBU, SLHPBU-16	2.18 LBS
DPTAR08FS	LAGR-08	2.75 LBS
DPTAR12FS	SAOR, HABU-12	2.47 LBS
DPTAR16FS	SAOR, HABU-16	2.1 LBS

NOTE: THE USE OF FITTINGS AND ASSEMBLY TOOLING OTHER THAN THAT SUPPLIED BY PIRANHA HOSE PRODUCTS IS AT THE RISK AND LIABILITY OF THE USER.

MENDERS

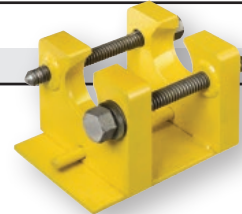


PART NO.	USE WITH HOSE SERIES	WEIGHT
F08MEND	SHBK, SLSHBK-08	.34 LBS
F10MEND	SPOR, SLSPOR-10	.34 LBS
F12MEND	SPOR, SLSPOR, HPBU, SLHPBU-12	.54 LBS
F16MEND	SPOR, SLSPOR, HPBU, SLHPBU-16	.77 LBS
F20MEND	SPOR, SLSPOR-20	1.22 LBS
FAR08MEND	LAGR-08	.39 LBS
FAR12MEND	SAOR, HABU-12	.69 LBS
FAR16MEND	SAOR, HABU-16	.98 LBS
FLL08MEND	LLBU, SLBU, LLGR, SLGR, LHBK, SLLHBK-08	.32 LBS
FA10MEND	SHBK, SLSHBK-10,	.44 LBS

HORIZONTAL SWAGE TOOL

A PIRANHA SUPPLIED SWAGING MACHINE IS REQUIRED FOR THE INSTALLATION OF END FITTINGS AND MENDERS. ALL ASSEMBLY TOOLING IS DESIGNED AND PRODUCED TO BE COMPATIBLE WITH THE PIRANHA HOSE PRODUCTS SUPPLIED SWAGING MACHINES.

PART NO.	WEIGHT
SWAGE HAND	25.5 LBS



HAND OPERATED HYDRAULIC SWAGING MACHINE

PART NO.	WEIGHT
SWAGE-HYD-sales	59 LBS



FOR AVAILABILITY OF PRODUCTS AND SIZES SHOWN, PLEASE REFER TO THE BACK PAGE FOR YOUR NEAREST STOCKING LOCATION. BECAUSE WE CONTINUALLY EXAMINE WAYS TO IMPROVE OUR PRODUCTS, WE RESERVE THE RIGHT TO ALTER SPECIFICATIONS OR DISCONTINUE PRODUCTS WITHOUT PRIOR NOTICE.





New Crimping Equipment

KD165 Package and Components

Now available from Piranha is the KD165 crimping system. This machine is capable of handling all of your assembly needs for Jetting / Lateral Line hose, as well as standard Sewer hose up to 1". This machine with its 60 ton press is built to get the job done.

KD165 Specifications:

- Dimensions L 22" X W 12.5" X H 22.25"
- Weight See Below
- Pump/Power Electric 1 HP (110V)
- Reservoir 1 Gal.
- Oil Type ISO Viscosity Grade 46
- Hose Capacity 1" Jetting / Lateral Line
..... 1" Standard Sewer

KD165 Crimper Without Dies

PART NUMBER	DESCRIPTION	WEIGHT
KuriKrimp™ KD165 Crimper Without Dies: KD165	Hose Crimper 60 Ton	140.0 lbs



KD165-124-PHP System for Piranha® Sewer Hose Fittings

PART NUMBER	DESCRIPTION	WEIGHT
Complete KuriKrimp™ KD165 System For Piranha® Sewer Hose Fittings:		
KD165-124-PHP	Complete System	165.0 lbs
KuriKrimp™ KD165 System Standard Dies for Piranha® Fittings:		
KD100-14/YellowRK	Standard Die 14mm Yellow	3.0 lbs
KD100-16/OrangeRK	Standard Die 16mm Orange	3.0 lbs
KD100-22/BlueRK	Standard Die 22mm Blue	3.0 lbs
KD100-27/BrownRK	Standard Die 27mm Brown	3.0 lbs
KD100-34/RedRK	Standard Die 34mm Red	3.0 lbs

Includes "NEW" KD100 Series Die Kages.



NOTE: THE USE OF FITTINGS AND ASSEMBLY TOOLING OTHER THAN THAT SUPPLIED BY PIRANHA HOSE PRODUCTS IS AT THE RISK AND LIABILITY OF THE USER.



FOR AVAILABILITY OF PRODUCTS AND SIZES SHOWN, PLEASE REFER TO THE BACK PAGE FOR YOUR NEAREST STOCKING LOCATION. BECAUSE WE CONTINUALLY EXAMINE WAYS TO IMPROVE OUR PRODUCTS, WE RESERVE THE RIGHT TO ALTER SPECIFICATIONS OR DISCONTINUE PRODUCTS WITHOUT PRIOR NOTICE.



Cautionary Statement

All products sold and distributed by Piranha Hose Products are in the nature of commodities and they are sold by published specifications and not for particular purposes, uses, or application. Purchaser shall first determine their suitability for the intended purposes, uses or applications and shall either conduct its own engineering studies or tests, or retain qualified engineers, consultants or testing laboratories and consult with them before determining the proper use, suitability or propriety of the merchandise or Products for the intended purposes, uses, or applications.

Piranha Hose Products ("Seller") does not recommend that the Products for any particular purpose, use or application, and the Purchaser or user thereof shall assume full responsibility for the suitability, propriety, use and application of the Products. Purchaser shall follow all instructions contained in Seller's catalogs, brochures, technical bulletins and other documents regarding the Products. The Products, including but not limited to, hose, tubing or couplings, may fail due to the use or conveyance of substances at elevated or lowered temperature or at excessive pressure, the conveyance of abrasive, injurious, flammable, explosive, or damaging substances.

Hose or tubing used in bent configurations will be subjected to increased abrasion. Hose clamps or couplings may loosen after initial installations and all sections of hose and tubing including connections, couplings, clamps, conductivity and bonding should be inspected frequently, regularly, consistently, and should be replaced, adjusted or re-tightened for the avoidance of leakage, for the prevention of injuries or damages, and for general safety purposes. Except as indicated in its Limited Warranty, Seller shall not be liable or responsible for direct or indirect injuries or damages caused by or attributed to the failure or malfunction of any Products sold or distributed by it.

Purchasers or users of the Products should frequently and consistently undertake inspections and protective measures with respect to the use and application of Products, which should include the examination of tube and cover, conditions of the hose or tubing, and the identification, repair or replacement of sections showing cracking, blistering, separations, internal and external abrasions, leaking or slipped couplings or connections and make proper proof tests.

Limited Warranty

The Products sold or distributed by Seller are warranted to its customers to be free from defects in material and workmanship at the time of shipment by us, subject to the following provisions. ALL WARRANTY CLAIMS SHALL BE MADE WITHIN SIX (6) MONTHS AFTER SELLER SHIPPED THE PRODUCTS. SELLER'S LIABILITY HEREUNDER IS LIMITED AT SELLER'S EXCLUSIVE DISCRETION, TO 1) THE PURCHASE PRICE OF ANY PRODUCTS PROVIDING DEFECTIVE; 2) REPAIR OF ANY DEFECTIVE PRODUCT OR PART THEREOF; OR 3) REPLACEMENT OF ANY DEFECTIVE PRODUCT OR PART UPON ITS AUTHORIZED RETURN TO SELLER.

THIS WARRANTY IS IN LIEU OF AND EXCLUDES ALL OTHER WARRANTIES, EXPRESSED, IMPLIED, STATUTORY, OR OTHERWISE CREATED UNDER APPLICABLE LAW INCLUDING, BUT NOT LIMITED TO, THE WARRANTY OF MERCHANTABILITY AND THE WARRANTY OF FITNESS FOR A PARTICULAR PURPOSE. IN NO EVENT SHALL SELLER OR THE MANUFACTURER OF THE PRODUCT BE LIABLE FOR SPECIAL, INCIDENTAL, OR CONSEQUENTIAL DAMAGES INCLUDING LOSS OF PROFITS, WHETHER OR NOT CAUSED BY OR RESULTING FROM THE NEGLIGENCE OF SELLER AND/OR THE MANUFACTURER OF THE PRODUCT, UNLESS SPECIFICALLY PROVIDED HEREIN. IN ADDITION, THIS WARRANTY SHALL NOT APPLY TO ANY PRODUCTS OR PORTIONS THEREOF WHICH HAVE BEEN SUBJECTED TO ABUSE, MISUSE, IMPROPER INSTALLATION, MAINTENANCE, OR OPERATION, ELECTRICAL FAILURE OR ABNORMAL CONDITIONS, AND TO PRODUCTS WHICH HAVE BEEN TAMPERED WITH, ALTERED, MODIFIED, REPAIRED, REWORKED BY ANYONE NOT APPROVED BY SELLER, OR USED IN ANY MANNER INCONSISTENT WITH THE PROVISIONS OF THE "CAUTIONARY STATEMENT" ABOVE OR ANY INSTRUCTIONS OR SPECIFICATIONS PROVIDED WITH OR FOR THE PRODUCT.

10/2009





HOSE PRODUCTS, INC.

A Kuriyama Group Company

"The Only Name in Sewer Cleaning"



Kuriyama of America, Inc.

Headquarters, Sales Office and Warehouse Location

360 E. State Parkway, Schaumburg, IL 60173-5335

Phone: (847) 755-0360 • Toll-free FAX: (800) 800-0320 • International FAX: (847) 885-0996

Web Site: www.kuriyama.com E-Mail: sales@kuriyama.com

Visit us
www.kuriyama.com
on the Web!

SALES OFFICES-CONTACT THE LOCATION BELOW WHICH SERVES YOUR AREA

Southwest Warehouse
Kuriyama of America, Inc. Houston

531 PORTWALL ST., SUITE 100
HOUSTON, TX 77029
Phone: (713) 674-8212
Toll Free Phone: (800) 501-6808
Fax: (713) 674-5214
Toll Free Fax: (800) 800-5214

Southeast Warehouse
Fortney Sales Co., Inc.

4221 CANTRELL ROAD NW
ACWORTH, GA 30101
Phone: (770) 427-6528
Fax: (770) 423-9249
Toll-Free Fax: (800) 423-9249
Web Site: www.fortneysales.com
E-Mail: sales@fortneysales.com

In Mexico:
Kuriyama de México S de RL de CV

CARRETERA MIGUEL ALEMÁN KM. 14.8
PARQUE INDUSTRIAL HASNA
APODACA, (MONTERREY), N.L., 66600 MEXICO
Tel: (81) 1086-1870 0 71
Toll-Free (within Mexico) 01-800-822-52-00
Fax: (81) 1086-1869
Internet: www.kuriyama.com
Correo Electronico: ventas@kuriyama.com

Western Warehouse
Kuriyama of America, Inc. Santa Fe Springs

10749 SHOEMAKER AVE.
SANTA FE SPRINGS, CA 90670-4039
Phone: (562) 941-4507
Fax: (561) 941-8940
Toll-Free Fax: (800) 326-8940

Eastern Warehouse
Eastern Rubber & Plastics Co., Inc.

RT. 537 PLUMSTED INDUSTRIAL PARK
NEW EGYPT, NJ 08533-0248
Phone: (609) 758-0100
Fax: (609) 758-0102
Toll-Free Fax: (800) 445-7138
Web Site: www.easternrubber.com
E-Mail: sales@easternrubber.com

DISTRIBUTED BY:

