



**Couplings &
Accessories**

***New &
Featured
Products
Catalog***



EDITION 0416



Kuriyama of America, Inc.



Ball and Socket Couplings – Irri-Loc®	
Aluminum Female x Shank with Interlocking Crimp Collar (Includes EPDM Gasket)	10
Aluminum Male x Shank with Interlocking Crimp Collar.....	10
Clamps	
Double Bolt Clamps.....	7
Interlocking Bolt Clamps.....	11
Combination Hose Nipples	
Jump Size Hose Nipple (Zinc Plated Steel) NPT Threads	10
Crimp Ferrules	
Kuri-Krimp™ 304 Stainless Steel Crimp Ferrules	4
Kuri-Krimp™ Plated Steel Crimp Ferrules.....	3
Kuri-Krimp™ Plated Steel Crimp Ferrules (For Ground Joints with Interlocking Collars).....	3
Crimp Sleeves	
Kuri-Krimp™ 304 Stainless Steel Crimp Sleeves	6
Kuri-Krimp™ Plated Steel Crimp Sleeves	4-5
Kuri-Krimp™ Plated Steel Crimp Sleeves (Short Length).....	5
Gaskets	
Male Garden Hose Fitting.....	12
Ground Joint Couplings	11
Grooved Couplings	
Grooved Couplings.....	12
Grooved Gasket.....	12
Grooved Quick Release Couplings	12
Hammer Unions	13-14
Hammer Unions - Barbed	14
Hydrant & Garden Hose	
Male Garden Hose Fitting.....	12
Pin Lug Hose Shank Couplings	6
Quick-Acting Special Application Couplings	7-9
Sight Glass	
Sight Glass - Acrylic (TTMA)	6
Strainers	15

Index by Series Number

SERIES	PAGE
AL-A	7
AL-B	7
AL-D	8
AL-F	8
BC4	11
BRGHT-M	12
CRF-CS	3
CRF-GJ	3
CRF-SS	4
CRS-CS	4, 5
CRS-SS	6
DA45	8
DA90	8
DB	11
DC90	9
DD	9
DD90	9

SERIES	PAGE
FHNST-M	6
FL-AL-A	9
FL-AL-D	9
GEC-B	12
GEC-E	12
GEC-QRB	12
GEC-QRE	12
GEG-BUNA	12
GEG-EPDM	12
GHG	12
GJM-CR	11
GJS-CR	11
HUB206	14
HUT100	13
HUT1002	13
HUT1502	14

SERIES	PAGE
HUT200	13
HUT206	13
HUT400	13
HUT602	13
HUW1002	14
HUW1502	14
HUW602	14
IL-CRA	10
IL-CRB	10
RDA-A	8
RDA-SS	9
RHS	15
SA-A	8
SG-TTMA	6
SHS	15
SPRN	10

Because we continually examine ways to improve our products, we reserve the right to alter specifications or discontinue products without prior notice.

NEW ITEMS



Kuri-Krimp™ Plated Steel Crimp Ferrules

Part Number	Hose ID (in.)	Ferrule ID (in.)	Wall Thickness (in.)	Length (in.)	Weight Each (lbs.)	Std. Carton
CRF-CS08105	3/4	1.31	0.059	2.14	0.15	200
CRF-CS08106	3/4	1.38	0.059	2.14	0.16	200
CRF-CS08107	3/4	1.44	0.059	2.14	0.17	200
CRF-CS08108	3/4	1.50	0.059	2.14	0.18	200
CRF-CS10108	1	1.50	0.059	2.29	0.19	200
CRF-CS10109	1	1.56	0.059	2.29	0.20	200
CRF-CS10110	1	1.63	0.059	2.29	0.21	200
CRF-CS10111	1	1.69	0.059	2.29	0.22	200
CRF-CS10112	1	1.75	0.059	2.29	0.23	200
CRF-CS10113	1	1.81	0.059	2.29	0.24	200
CRF-CS15200	1 1/2	2.00	0.059	2.36	0.25	128
CRF-CS15202	1 1/2	2.12	0.059	2.36	0.26	128
CRF-CS15204	1 1/2	2.25	0.059	2.36	0.27	80
CRF-CS15206	1 1/2	2.39	0.059	2.36	0.28	80
CRF-CS20208	1 1/2	2.50	0.059	2.36	0.35	80
CRF-CS20209	2	2.56	0.059	2.79	0.37	80
CRF-CS20210	2	2.62	0.059	2.79	0.40	80
CRF-CS20211	2	2.68	0.059	2.79	0.40	80
CRF-CS20213	2	2.81	0.059	2.79	0.42	80
CRF-CS20215	2	2.94	0.059	2.79	0.44	80
CRF-CS25302	2 1/2	3.12	0.059	3.11	0.52	60
CRF-CS25304	2 1/2	3.25	0.059	3.11	0.54	60
CRF-CS25306	2 1/2	3.39	0.059	3.11	0.56	60
CRF-CS25308	2 1/2	3.50	0.059	3.11	0.58	60
CRF-CS30309	3	3.56	0.091	3.94	1.17	40
CRF-CS30310	3	3.62	0.091	3.94	1.19	40
CRF-CS30311	3	3.69	0.091	3.94	1.20	40
CRF-CS30312	3	3.75	0.091	3.94	1.21	40
CRF-CS30313	3	3.81	0.091	3.94	1.23	40
CRF-CS30315	3	3.94	0.091	3.94	1.25	40
CRF-CS30400	3	4.00	0.091	3.94	1.30	40
CRF-CS40409	4	4.56	0.091	4.19	1.57	30
CRF-CS40410	4	4.63	0.091	4.19	1.59	30
CRF-CS40411	4	4.68	0.091	4.19	1.61	30
CRF-CS40412	4	4.75	0.091	4.19	1.63	30
CRF-CS40413	4	4.81	0.091	4.19	1.65	30
CRF-CS40414	4	4.88	0.091	4.19	1.67	30
CRF-CS40500	4	5.00	0.091	4.19	1.72	30
CRF-CS40501	4	5.06	0.091	4.19	1.74	30
CRF-CS60610	6	6.63	0.118	5.67	4.02	12
CRF-CS60612	6	6.75	0.118	5.67	4.10	12
CRF-CS60614	6	6.88	0.118	5.67	4.17	12
CRF-CS60700	6	7.00	0.118	5.67	4.24	12
CRF-CS60702	6	7.13	0.118	5.67	4.31	12
CRF-CS60704	6	7.25	0.118	5.67	4.39	12
CRF-CS60706	6	7.38	0.118	5.67	4.47	12

NEW ITEMS



Kuri-Krimp™ Plated Steel Crimp Ferrules (For Ground Joints with Interlocking Collars)

Part Number	Hose ID (in.)	Ferrule ID (in.)	Wall Thickness (in.)	Length (in.)	Weight Each (lbs.)	Std. Carton
CRF-GJ05100S	1/2	1.00	0.059	1.41	0.08	200
CRF-GJ05101S	1/2	1.06	0.059	1.41	0.09	200
CRF-GJ05102S	1/2	1.13	0.059	1.41	0.10	200
CRF-CS08105	3/4	1.31	0.059	2.14	0.15	200
CRF-CS08106	3/4	1.38	0.059	2.14	0.16	200
CRF-CS08107	3/4	1.44	0.059	2.14	0.17	200
CRF-CS08108	3/4	1.50	0.059	2.14	0.18	200
CRF-CS10108	1	1.50	0.059	2.29	0.19	200
CRF-CS10109	1	1.56	0.059	2.29	0.20	200
CRF-CS10110	1	1.63	0.059	2.29	0.21	200
CRF-CS10111	1	1.69	0.059	2.29	0.22	200
CRF-CS10112	1	1.75	0.059	2.29	0.23	200
CRF-CS10113	1	1.81	0.059	2.29	0.24	200
CRF-GJ13113L	1 1/4	1.81	0.059	2.74	0.30	128
CRF-GJ13114L	1 1/4	1.88	0.059	2.74	0.31	128
CRF-GJ13115L	1 1/4	1.94	0.059	2.74	0.32	128
CRF-GJ15201L	1 1/2	2.06	0.059	2.91	0.35	128
CRF-GJ15202L	1 1/2	2.13	0.059	2.91	0.36	128
CRF-GJ15203L	1 1/2	2.19	0.059	2.91	0.38	128
CRF-GJ15204L	1 1/2	2.25	0.059	2.91	0.39	128
CRF-GJ15205L	1 1/2	2.31	0.059	2.91	0.40	128
CRF-GJ20210L	2	2.63	0.059	3.41	0.51	80
CRF-GJ20211L	2	2.69	0.059	3.41	0.53	80
CRF-GJ20212L	2	2.75	0.059	3.41	0.55	80
CRF-GJ20213L	2	2.81	0.059	3.41	0.56	80
CRF-GJ20214L	2	2.88	0.059	3.41	0.58	80
CRF-GJ25303L	2 1/2	3.19	0.059	3.88	0.70	60
CRF-GJ25304L	2 1/2	3.25	0.059	3.88	0.72	60
CRF-GJ25305L	2 1/2	3.31	0.059	3.88	0.74	60
CRF-GJ30311L	3	3.68	0.091	4.36	1.39	40
CRF-GJ30312L	3	3.75	0.091	4.36	1.42	40
CRF-GJ30313L	3	3.81	0.091	4.36	1.46	40
CRF-GJ30314L	3	3.88	0.091	4.36	1.48	40
CRF-GJ30315L	3	3.94	0.091	4.36	1.53	40
CRF-GJ40412L	4	4.75	0.091	5.20	2.11	30
CRF-GJ40413L	4	4.81	0.091	5.20	2.16	30
CRF-GJ40414L	4	4.88	0.091	5.20	2.19	30
CRF-GJ40415L	4	4.94	0.091	5.20	2.23	30
CRF-GJ40500L	4	5.00	0.091	5.20	2.27	30

* Ferrules for 3/4" & 1" hose are the same as ones used for quick-acting couplings and crimp nipples

Because we continually examine ways to improve our products, we reserve the right to alter specifications or discontinue products without prior notice.

Kuri-Krimp™ Crimp Ferrules



NEW
ITEMS

Kuri-Krimp™ 304 Stainless Steel Crimp Ferrules

Part Number	Hose ID (in.)	Ferrule ID (in.)	Wall Thickness (in.)	Length (in.)	Weight Each (lbs.)	Std. Carton
CRF-SS10108	1	1.50	0.059	2.29	0.20	200
CRF-SS10109	1	1.56	0.059	2.29	0.21	200
CRF-SS10110	1	1.63	0.059	2.29	0.21	200
CRF-SS10111	1	1.69	0.059	2.29	0.23	200
CRF-SS10112	1	1.75	0.059	2.29	0.23	200
CRF-SS10113	1	1.81	0.059	2.29	0.24	200
CRF-SS15200	1 1/2	2.00	0.059	2.36	0.27	128
CRF-SS15202	1 1/2	2.12	0.059	2.36	0.29	128
CRF-SS15204	1 1/2	2.25	0.059	2.36	0.27	80
CRF-SS15206	1 1/2	2.39	0.059	2.36	0.30	80
CRF-SS15208	1 1/2	2.50	0.059	2.36	0.35	80
CRF-SS20209	2	2.56	0.059	2.79	0.40	80
CRF-SS20210	2	2.62	0.059	2.79	0.43	80
CRF-SS20211	2	2.68	0.059	2.79	0.43	80
CRF-SS20213	2	2.81	0.059	2.79	0.44	80
CRF-SS20215	2	2.94	0.059	2.79	0.46	80
CRF-SS25302	2 1/2	3.12	0.059	3.11	0.56	60
CRF-SS25304	2 1/2	3.25	0.059	3.11	0.58	60
CRF-SS25306	2 1/2	3.39	0.059	3.11	0.60	60
CRF-SS25308	2 1/2	3.50	0.059	3.11	0.62	60
CRF-SS30309	3	3.56	0.098	3.94	1.27	40
CRF-SS30310	3	3.62	0.098	3.94	1.29	40
CRF-SS30311	3	3.69	0.098	3.94	1.3	40
CRF-SS30312	3	3.75	0.098	3.94	1.31	40
CRF-SS30313	3	3.81	0.098	3.94	1.33	40
CRF-SS30315	3	3.94	0.098	3.94	1.36	40
CRF-SS30400	3	4.00	0.098	3.94	1.40	40
CRF-SS40409	4	4.56	0.098	4.19	1.57	30
CRF-SS40410	4	4.63	0.098	4.19	1.59	30
CRF-SS40411	4	4.68	0.098	4.19	1.74	30
CRF-SS40412	4	4.75	0.098	4.19	1.76	30
CRF-SS40413	4	4.81	0.098	4.19	1.78	30
CRF-SS40414	4	4.88	0.098	4.19	1.82	30
CRF-SS40500	4	5.00	0.098	4.19	1.86	30
CRF-SS40501	4	5.06	0.098	4.19	1.89	30



NEW
ITEMS

Kuri-Krimp™ Plated Steel Crimp Sleeves

Part Number	Hose ID (in.)	Ferrule ID (in.)	Wall Thickness (in.)	Length (in.)	Weight Each (lbs.)	Std. Carton
CRS-CS10106	1	1.38	0.059	2.29	0.17	200
CRS-CS10108	1	1.50	0.059	2.29	0.19	200
CRS-CS10109	1	1.56	0.059	2.29	0.20	200
CRS-CS10111	1	1.69	0.059	2.29	0.22	200
CRS-CS15113	1 1/2	1.81	0.059	2.36	0.25	128
CRS-CS15200	1 1/2	2.00	0.059	2.36	0.25	128
CRS-CS15202	1 1/2	2.12	0.059	2.36	0.26	128
CRS-CS15204	1 1/2	2.25	0.059	2.36	0.27	80
CRS-CS15206	1 1/2	2.39	0.059	2.36	0.28	80
CRS-CS20207	2	2.44	0.059	2.79	0.34	80
CRS-CS20209	2	2.56	0.059	2.79	0.37	80
CRS-CS20210	2	2.62	0.059	2.79	0.40	80
CRS-CS20211	2	2.68	0.059	2.79	0.40	80
CRS-CS20213	2	2.81	0.059	2.79	0.42	80
CRS-CS20215	2	2.94	0.059	2.79	0.44	80
CRS-CS25300	2 1/2	3.00	0.059	3.11	0.50	60
CRS-CS25302	2 1/2	3.12	0.059	3.11	0.52	60
CRS-CS25304	2 1/2	3.25	0.059	3.11	0.54	60
CRS-CS25306	2 1/2	3.39	0.059	3.11	0.56	60
CRS-CS25308	2 1/2	3.50	0.059	3.11	0.58	60
CRS-CS30310	3	3.62	0.091	3.94	1.19	40
CRS-CS30312	3	3.75	0.091	3.94	1.21	40
CRS-CS30313	3	3.81	0.091	3.94	1.23	40
CRS-CS30314	3	3.88	0.091	3.94	1.25	40
CRS-CS30400	3	4.00	0.091	3.94	1.30	40
CRS-CS40404	4	4.25	0.091	4.19	1.54	30
CRS-CS40406	4	4.38	0.091	4.19	1.56	30
CRS-CS40408	4	4.50	0.091	4.19	1.58	30
CRS-CS40411	4	4.68	0.091	4.19	1.61	30
CRS-CS40412	4	4.75	0.091	4.19	1.63	30
CRS-CS40413	4	4.81	0.091	4.19	1.65	30
CRS-CS40415	4	4.94	0.091	4.19	1.68	30
CRS-CS40500	4	5.00	0.091	4.19	1.72	30
CRS-CS50509	5	5.56	0.118	4.57	2.58	18
CRS-CS50512	5	5.75	0.118	4.57	2.65	18
CRS-CS50515	5	5.94	0.118	4.57	2.74	18
CRS-CS60604	6	6.25	0.118	5.67	3.81	12
CRS-CS60606	6	6.38	0.118	5.67	3.88	12

Because we continually examine ways to improve our products, we reserve the right to alter specifications or discontinue products without prior notice.

NEW
ITEMS



Kuri-Krimp™ Plated Steel Crimp Sleeves (continued)

Part Number	Hose ID (in.)	Ferrule ID (in.)	Wall Thickness (in.)	Length (in.)	Weight Each (lbs.)	Std. Carton
CRS-CS60608	6	6.50	0.118	5.67	3.95	12
CRS-CS60610	6	6.63	0.118	5.67	4.02	12
CRS-CS60612	6	6.75	0.118	5.67	4.10	12
CRS-CS60614	6	6.88	0.118	5.67	4.17	12
CRS-CS60700	6	7.00	0.118	5.67	4.24	12
CRS-CS60704	6	7.25	0.118	5.67	4.39	12
CRS-CS60706	6	7.38	0.118	5.67	4.47	12
CRS-CS80808	8	8.50	0.118	6.50	5.95	4
CRS-CS80812	8	8.75	0.118	6.50	6.06	4
CRS-CS80814	8	8.88	0.118	6.50	6.15	4
CRS-CS80900	8	9.00	0.118	6.50	6.23	4
CRS-CS80902	8	9.13	0.118	6.50	6.32	4
CRS-CS80904	8	9.25	0.118	6.50	6.41	4
CRS-CS80908	8	9.50	0.118	6.50	6.58	4
CRS-CS1001012	10	10.75	0.120	6.50	7.42	2
CRS-CS1001100	10	11.00	0.120	6.50	7.60	2
CRS-CS1001104	10	11.25	0.120	6.50	7.78	2
CRS-CS1201212	12	12.75	0.120	9.00	12.18	1
CRS-CS1201300	12	13.00	0.120	9.00	12.40	1
CRS-CS1201304	12	13.25	0.120	9.00	12.64	1

NEW
ITEMS



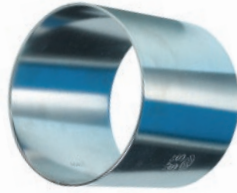
Kuri-Krimp™ Plated Steel Crimp Sleeves (Short Length)

Part Number	Hose ID (in.)	Ferrule ID (in.)	Wall Thickness (in.)	Length (in.)	Weight Each (lbs.)	Std. Carton
CRS-CS13112S	1 1/4	1.63	0.059	1.26	0.12	128
CRS-CS13113S	1 1/4	1.81	0.059	1.26	0.12	128
CRS-CS13114S	1 1/4	1.88	0.059	1.26	0.13	128
CRS-CS15115S	1 1/4	1.94	0.059	1.26	0.15	128
CRS-CS15200S	1 1/2	2.00	0.059	1.46	0.16	128
CRS-CS15201S	1 1/2	2.06	0.059	1.46	0.16	128
CRS-CS15202S	1 1/2	2.13	0.059	1.46	0.17	128
CRS-CS15203S	1 1/2	2.19	0.059	1.46	0.17	128
CRS-CS20204S	2	2.25	0.059	1.81	0.22	80
CRS-CS20206S	2	2.38	0.059	1.81	0.23	80
CRS-CS20207S	2	2.44	0.059	1.81	0.24	80
CRS-CS20208S	2	2.50	0.059	1.81	0.25	80
CRS-CS20209S	2	2.56	0.059	1.81	0.25	80
CRS-CS20210S	2	2.63	0.059	1.81	0.26	80
CRS-CS20212S	2	2.75	0.059	1.81	0.27	80
CRS-CS25214S	2 1/2	2.88	0.059	2.28	0.35	60
CRS-CS25300S	2 1/2	3.00	0.059	2.28	0.37	60
CRS-CS25302S	2 1/2	3.13	0.059	2.28	0.38	60
CRS-CS25304S	2 1/2	3.25	0.059	2.28	0.40	60
CRS-CS30306S	3	3.38	0.091	2.44	0.68	40
CRS-CS30307S	3	3.44	0.091	2.44	0.69	40
CRS-CS30308S	3	3.50	0.091	2.44	0.71	40
CRS-CS30309S	3	3.56	0.091	2.44	0.72	40
CRS-CS30310S	3	3.63	0.091	2.44	0.73	40
CRS-CS30311S	3	3.69	0.091	2.44	0.75	40
CRS-CS30313S	3	3.81	0.091	2.44	0.77	40
CRS-CS30400S	3	4.00	0.091	2.44	0.80	40
CRS-CS40404S	4	4.25	0.091	3.31	1.16	30
CRS-CS40406S	4	4.38	0.091	3.31	1.19	30
CRS-CS40408S	4	4.50	0.091	3.31	1.22	30
CRS-CS40409S	4	4.56	0.091	3.31	1.24	30
CRS-CS40410S	4	4.63	0.091	3.31	1.26	30
CRS-CS40411S	4	4.69	0.091	3.31	1.27	30
CRS-CS40412S	4	4.75	0.091	3.31	1.29	30
CRS-CS40413S	4	4.81	0.091	3.31	1.31	30

Because we continually examine ways to improve our products, we reserve the right to alter specifications or discontinue products without prior notice.

Kuri-Krimp™ Crimp Sleeves

NEW
ITEMS



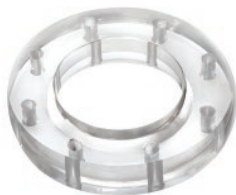
Kuri-Krimp™ 304 Stainless Steel Crimp Sleeves

Part Number	Hose ID (in.)	Ferrule ID (in.)	Wall Thickness (in.)	Length (in.)	Weight Each (lbs.)	Std. Carton
CRS-SS10106	1	1.38	0.059	2.29	0.17	200
CRS-SS10108	1	1.50	0.059	2.29	0.20	200
CRS-SS10109	1	1.56	0.059	2.29	0.21	200
CRS-SS10111	1	1.69	0.059	2.29	0.23	200
CRS-SS10113	1	1.81	0.059	2.29	0.25	128
CRS-SS15200	1 1/2	2.00	0.059	2.36	0.27	128
CRS-SS15202	1 1/2	2.12	0.059	2.36	0.29	128
CRS-SS15204	1 1/2	2.25	0.059	2.36	0.29	80
CRS-SS15206	1 1/2	2.39	0.059	2.36	0.30	80
CRS-SS20207	2	2.44	0.059	2.79	0.37	80
CRS-SS20209	2	2.56	0.059	2.79	0.40	80
CRS-SS20210	2	2.62	0.059	2.79	0.43	80
CRS-SS20211	2	2.68	0.059	2.79	0.43	80
CRS-SS20213	2	2.81	0.059	2.79	0.44	80
CRS-SS20215	2	2.94	0.059	2.79	0.46	80
CRS-SS25300	2 1/2	3.00	0.059	3.11	0.54	60
CRS-SS25302	2 1/2	3.12	0.059	3.11	0.56	60
CRS-SS25304	2 1/2	3.25	0.059	3.11	0.58	60
CRS-SS25306	2 1/2	3.39	0.059	3.11	0.60	60
CRS-SS25308	2 1/2	3.50	0.059	3.11	0.62	60
CRS-SS30310	3	3.62	0.098	3.94	1.29	40

Part Number	Hose ID (in.)	Ferrule ID (in.)	Wall Thickness (in.)	Length (in.)	Weight Each (lbs.)	Std. Carton
CRS-SS30312	3	3.75	0.098	3.94	1.31	40
CRS-SS30313	3	3.81	0.098	3.94	1.33	40
CRS-SS30314	3	3.88	0.098	3.94	1.35	40
CRS-SS30400	3	4.00	0.098	3.94	1.40	40
CRS-SS40404	4	4.25	0.098	4.19	1.60	30
CRS-SS40406	4	4.38	0.098	4.19	1.64	30
CRS-SS40408	4	4.50	0.098	4.19	1.68	30
CRS-SS40411	4	4.68	0.098	4.19	1.74	30
CRS-SS40412	4	4.75	0.098	4.19	1.76	30
CRS-SS40413	4	4.81	0.098	4.19	1.78	30
CRS-SS40415	4	4.94	0.098	4.19	1.82	30
CRS-SS40500	4	5.00	0.098	4.19	1.86	30
CRS-SS60604	6	6.25	0.118	5.67	3.81	12
CRS-SS60606	6	6.38	0.118	5.67	3.88	12
CRS-SS60608	6	6.50	0.118	5.67	3.95	12
CRS-SS60610	6	6.63	0.118	5.67	4.32	12
CRS-SS60612	6	6.75	0.118	5.67	4.41	12
CRS-SS60614	6	6.88	0.118	5.67	4.48	12
CRS-SS60700	6	7.00	0.118	5.67	4.56	12
CRS-SS60704	6	7.25	0.118	5.67	4.72	12
CRS-SS60706	6	7.38	0.118	5.67	4.81	12

Sight Glass

NEW
ITEMS



Sight Glass - Acrylic (TTMA)

Part Number	Size (in.)	Weight Each (lbs.)	Standard Carton
SG-TTMA300	3	1.21	20
SG-TTMA400	4	1.45	20

Pin Lug Hose Shank Couplings

NEW
ITEMS



Aluminum Shank Male End (NST Threads)

Part Number	Size (in.)	Weight Each (lbs.)	Standard Carton
FHNST-M150	1 1/2	0.14	150
FHNST-M250	2 1/2	0.34	36

Because we continually examine ways to improve our products, we reserve the right to alter specifications or discontinue products without prior notice.

NEW
ITEMS



Zinc Plated Ductile Iron Double Bolt Hose Clamp

Part Number	Size Range (in.)	Torque (ft. lbs.)	Weight Each (lbs.)	Std. Carton
DB29	7/8 - 1 9/64	20	0.29	200
DB34	1 5/32 - 1 11/32	20	0.31	200
DB40	1 5/16 - 1 19/32	20	0.43	100
DB49	1 5/8 - 1 15/16	20	0.56	100
DB60	1 7/8 - 2 3/8	20	0.64	60
DB76	2 3/8 - 3 1/64	40	0.73	60
DB94	3 1/32 - 3 11/16	40	1.30	40
DB115	3 3/4 - 4 1/2	40	1.68	20
DB400	3 1/2 - 4	40	1.54	30
DB431	3 25/32 - 4 1/16	40	2.13	30
DB463	4 1/16 - 4 7/16	40	1.79	30
DB525	4 3/16 - 5	60	2.14	20

Part Number	Size Range (in.)	Torque (ft. lbs.)	Weight Each (lbs.)	Std. Carton
DB550	5 - 5 1/2	60	2.27	20
DB600	5 1/2 - 6 1/16	60	2.65	20
DB639	5 11/16 - 5 15/16	60	2.80	20
DB675	6 1/8 - 6 7/8	60	2.98	20
DB769	6 15/16 - 7 5/8	60	3.81	10
DB818	7 11/16 - 8 3/16	125	5.11	10
DB875	8 1/4 - 8 7/8	125	5.64	10
DB988	8 15/16 - 9 7/8	125	6.15	10
DB1125	9 15/16 - 11 3/8	125	9.48	4
DB1275	11 3/16 - 12 1/2	125	9.61	4
DB1360	12 3/16 - 14	200	15.43	3
DB1450	13 3/16 - 17 1/2	200	16.74	3

Quick-Acting Special Application Couplings

NEW
ITEMS



Aluminum Reducing Adapter x Female NPT

Part Number	Size (in.)	Weight Each (lbs.)	Standard Carton
AL-A2015	2 x 1 1/2	0.44	40
AL-A2030	2 x 3	0.75	24
AL-A3020	3 x 2	0.88	36
AL-A3040	3 x 4	1.37	18
AL-A4030	4 x 3	1.61	12

NEW
ITEMS



Aluminum Reducing Coupler x Male NPT

Part Number	Size (in.)	Weight Each (lbs.)	Standard Carton
AL-B2015	2 x 1 1/2	0.84	24
AL-B2030	2 x 3	1.43	12
AL-B3020	3 x 2	1.57	12
AL-B3040	3 x 4	2.45	18
AL-B4030	4 x 3	2.31	10

Because we continually examine ways to improve our products, we reserve the right to alter specifications or discontinue products without prior notice.

Quick-Acting Special Application Couplings

NEW
ITEMS



Aluminum Reducing Coupler x Female NPT

Part Number	Size (in.)	Weight Each (lbs.)	Standard Carton
AL-D2015	2 x 1 1/2	0.88	24
AL-D3020	3 x 2	1.65	12
AL-D4030	4 x 3	2.49	8

NEW
ITEMS



Aluminum Reducing Adapter x Male NPT

Part Number	Size (in.)	Weight Each (lbs.)	Standard Carton
AL-F2015	2 x 1 1/2	0.64	40
AL-F2030	2 x 3	1.06	20
AL-F3020	3 x 2	0.86	24
AL-F3040	3 x 4	1.78	25
AL-F4030	4 x 3	1.57	18

NEW
ITEMS



Aluminum Reducing Coupler x Adapter

Part Number	Size (in.)	Weight Each (lbs.)	Standard Carton
RDA-A2015	2 x 1 1/2	0.99	20
RDA-A2030	2 x 3	1.64	12
RDA-A3020	3 x 2	2.37	6
RDA-A3040	3 x 4	2.60	6
RDA-A4020	4 x 2	2.70	6
RDA-A4030	4 x 3	2.96	6
RDA-A4050	4 x 5	4.41	4
RDA-A5040	5 x 4	4.07	4
RDA-A6040	6 x 4	6.66	2
RDA-A8060	8 x 6	10.40	4

NEW
ITEMS



Aluminum Spool Adapter

Part Number	Size (in.)	Weight Each (lbs.)	Standard Carton
SA-A150	1 1/2	0.43	50
SA-A1520	1 1/2 x 2	0.55	40
SA-A200	2	0.68	40
SA-A2030	2 x 3	0.97	12
SA-A300	3	1.10	12
SA-A3040	3 x 4	1.78	8
SA-A400	4	1.91	6
SA-A4060	4 x 6	3.64	8
SA-A600	6	3.48	4

NEW
ITEMS



Aluminum Elbow Coupler x Adapter 90 Degree

Part Number	Size (in.)	Weight Each (lbs.)	Standard Carton
DA90-A150	1 1/2	1.10	20
DA90-A200	2	1.50	16
DA90-A300	3	2.17	10
DA90-A400	4	4.30	5
DA90-A600	6	13.20	2

NEW
ITEMS



Aluminum Elbow Coupler x Adapter 45 Degree

Part Number	Size (in.)	Weight Each (lbs.)	Standard Carton
DA45-A200	2	1.65	10
DA45-A300	3	2.45	6
DA45-A400	4	4.90	4
DA45-A600	6	14.80	2

Because we continually examine ways to improve our products, we reserve the right to alter specifications or discontinue products without prior notice.

Quick-Acting Special Application Couplings

NEW
ITEMS



Aluminum Elbow Coupler x Hose Shank 90 Degree

Part Number	Size (in.)	Weight Each (lbs.)	Standard Carton
DC90-A150	1 1/2	1.08	24
DC90-A200	2	1.48	24
DC90-A300	3	2.50	10
DC90-A400	4	4.80	5
DC90-A600	6	14.50	2

NEW
ITEMS



Aluminum Coupler x Coupler

Part Number	Size (in.)	Weight Each (lbs.)	Standard Carton
DD-AL150	1 1/2	1.23	24
DD-AL200	2	1.43	12
DD-AL2030	2 x 3	4.35	9
DD-AL300	3	2.40	6
DD-AL3040	3 x 4	5.90	12
DD-AL400	4	3.90	5
DD-AL600	6	7.32	4

NEW
ITEMS



Aluminum Elbow Coupler x Coupler 90 Degree

Part Number	Size (in.)	Weight Each (lbs.)	Standard Carton
DD90-AL200	2	2.20	16
DD90-AL300	3	3.50	10
DD90-AL400	4	5.10	5
DD90-AL600	6	10.50	2

NEW
ITEMS



Aluminum Coupler x 150# ASA Flange

Part Number	Size (in.)	Weight Each (lbs.)	Standard Carton
FL-AL-D200	2	2.35	4
FL-AL-D300	3	5.07	3
FL-AL-D400	4	7.94	2
FL-AL-D600	6	12.89	1
FL-AL-D800	8	16.50	1

NEW
ITEMS



Aluminum Adapter x 150# ASA Flange

Part Number	Size (in.)	Weight Each (lbs.)	Standard Carton
FL-AL-A200	2	3.05	6
FL-AL-A300	3	3.86	4
FL-AL-A400	4	5.86	3
FL-AL-A600	6	9.92	2
FL-AL-A800	8	14.50	1

NEW
ITEMS



Stainless Steel SS316 Reducing Coupler x Adapter

Part Number	Size (in.)	Weight Each (lbs.)	Standard Carton
RDA-SS2030	2 x 3	3.45	6
RDA-SS3020	3 x 2	4.08	6
RDA-SS4030	4 x 3	6.41	4
RDA-SS6040	6 x 4	12.10	2

Because we continually examine ways to improve our products, we reserve the right to alter specifications or discontinue products without prior notice.

Combination Hose Nipples

NEW
ITEMS



Jump Size Hose Nipple (Zinc Plated Steel) NPT Threads

Part Number	Size (in.)	Weight Each (lbs.)	Standard Carton
SPRN-075100	3/4 x 1	0.35	100
SPRN-100075	1 x 3/4	0.19	200
SPRN-100125	1 x 1 1/4	0.44	80
SPRN-125100	1 1/4 x 1	0.30	80
SPRN-125150	1 1/4 x 1 1/2	0.65	60
SPRN-150125	1 1/2 x 1 1/4	0.44	80
SPRN-150200	1 1/2 x 2	0.88	50
SPRN-200150	2 x 1 1/2	0.73	60
SPRN-200250	2 x 2 1/2	1.65	20
SPRN-250200	2 1/2 x 2	1.40	20
SPRN-250300	2 1/2 x 3	1.92	20
SPRN-300250	3 x 2 1/2	1.91	20
SPRN-300400	3 x 4	2.95	8
SPRN-400300	4 x 3	2.91	15

Irri-Loc® Ball and Socket Couplings

NEW
ITEMS



Aluminum Female x Shank with Interlocking Crimp Collar (Includes EPDM Gasket)

Part Number	Size (in.)	Weight Each (lbs.)	Standard Carton
IL-CRA400	4	2.76	4
IL-CRA600	6	5.64	4
IL-CRA800	8	9.95	1

NEW
ITEMS



Aluminum Male x Shank with Interlocking Crimp Collar

Part Number	Size (in.)	Weight Each (lbs.)	Standard Carton
IL-CRB400	4	3.29	4
IL-CRB600	6	6.27	4
IL-CRB800	8	11.85	1

Because we continually examine ways to improve our products, we reserve the right to alter specifications or discontinue products without prior notice.

NEW
ITEMS



Hose Stem with Interlocking Collar

Part Number	Size (in.)	Weight Each (lbs.)	Standard Carton
GJS-CR050	1/2	0.23	200
GJS-CR075	3/4	0.54	100
GJS-CR100	1	0.59	100
GJS-CR125	1 1/4	1.11	32
GJS-CR150	1 1/2	1.21	35
GJS-CR200	2	1.87	25
GJS-CR250	2 1/2	3.57	10
GJS-CR300	3	4.68	8
GJS-CR400	4	8.81	4

Note: Ground Joint fittings with interlocking collars are not for use with steam hose.

NEW
ITEMS



Threaded Male Hose Shank with Interlocking Collar (NPT Threads)

Part Number	Size (in.)	Weight Each (lbs.)	Standard Carton
GJM-CR050	1/2	0.22	250
GJM-CR075	3/4	0.43	250
GJM-CR100	1	0.66	100
GJM-CR125	1 1/4	1.28	32
GJM-CR150	1 1/2	1.36	25
GJM-CR200	2	2.32	20
GJM-CR250	2 1/2	4.06	8
GJM-CR300	3	5.63	6
GJM-CR400	4	10.79	3

Note: Ground Joint fittings with interlocking collars are not for use with steam hose.

Interlocking Bolt Clamps

NEW
ITEMS

4 Bolt Hose Clamp (Recommended for use with Ground Joint Couplings)

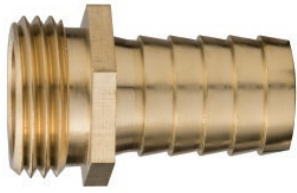


Part Number	Size (in.)	Weight Each (lbs.)	Torque (ft. lbs.)	Standard Carton
BC4-100	1 17/32 - 1 23/32	1.50	21	24
BC4-100A	1 13/32 - 1 9/16	1.54	21	24
BC4-100B	1 11/16 - 1 27/32	1.68	21	24
BC4-100C	1 7/8 - 2 1/16	1.90	21	20
BC4-125	2 1/16 - 2 1/4	2.36	40	20
BC4-150S	1 13/16 - 2	2.49	40	20
BC4-150	2 - 2 17/32	2.40	40	20
BC4-150A	2 3/32 - 2 9/32	2.56	40	20
BC4-150B	2 1/4 - 2 7/16	2.78	40	20
BC4-150C	2 15/32 - 2 23/32	2.67	40	20
BC4-200	2 11/32 - 2 17/32	3.04	60	20
BC4-200A	2 1/2 - 2 25/32	2.84	60	20
BC4-200B	2 3/4 - 3 1/16	3.99	60	16
BC4-200C	3 3/32 - 3 7/16	3.97	60	14
BC4-250	3 1/2 - 3 15/16	6.86	150	5
BC4-300	3 1/2 - 3 15/16	7.45	150	5
BC4-300A	3 13/16 - 4 1/16	7.89	150	5
BC4-300B	4 1/16 - 4 7/16	10.19	200	4
BC4-300C	4 - 4 3/16	10.30	200	4

Note: Ground joint fittings with interlocking collars are not for use with steam hoses.

Because we continually examine ways to improve our products, we reserve the right to alter specifications or discontinue products without prior notice.

Hydrant & Garden Hose



NEW
ITEMS

Male Garden Hose Fitting

Part Number	Size (in.)	Thread	Weight Each (lbs.)	Standard Carton
BRGHT-M050	1/2	GHT	0.13	360
BRGHT-M062	5/8	GHT	0.13	360
BRGHT-M075	3/4	GHT	0.13	360
BRNPS-M100	1	NPS	0.25	240

Gaskets



NEW
ITEMS

Garden Hose Gasket

Part Number	Size (in.)	Weight Each (lbs.)	Standard Carton
GHG075	3/4	0.003	100
GHG100	1	0.004	100

Grooved Couplings



Grooved Couplings

Part Number (Buna Gasket)	Part Number (EPDM Gasket)	Size (in.)	Weight Each (lbs.)	Std. Carton
GEC-B200	GEC-E200	2	2.50	15
GEC-B250	GEC-E250	2 1/2	3.45	10
GEC-B300	GEC-E300	3	3.80	10
GEC-B400	GEC-E400	4	5.60	5
GEC-B600	GEC-E600	6	10.05	4
GEC-B800	GEC-E800	8	19.55	2
GEC-B1000	GEC-E1000	10	26.15	1
GEC-B1200	GEC-E1200	12	30.65	1

Grooved Quick Release Couplings

Part Number (Buna Gasket)	Part Number (EPDM Gasket)	Size (in.)	Weight Each (lbs.)	Std. Carton
GEC-QRB200	GEC-QRE200	2	1.77	20
GEC-QRB250	GEC-QRE250	2 1/2	2.65	10
GEC-QRB300	GEC-QRE300	3	3.22	10
GEC-QRB400	GEC-QRE400	4	5.32	5
GEC-QRB600	GEC-QRE600	6	7.76	3
GEC-QRB800	GEC-QRE800	8	13.15	2

Grooved Gasket

Part Number (Buna)	Part Number (EPDM)	Size (in.)	Weight Each (lbs.)	Std. Carton
GEG-BUNA200	GEG-EPDM200	2	0.082	1
GEG-BUNA250	GEG-EPDM250	2 1/2	0.107	1
GEG-BUNA300	GEG-EPDM300	3	0.127	1
GEG-BUNA400	GEG-EPDM400	4	0.194	1

Part Number (Buna)	Part Number (EPDM)	Size (in.)	Weight Each (lbs.)	Std. Carton
GEG-BUNA600	GEG-EPDM600	6	0.308	1
GEG-BUNA800	GEG-EPDM800	8	0.671	1
GEG-BUNA1000	GEG-EPDM1000	10	0.771	1
GEG-BUNA1200	GEG-EPDM1200	12	0.889	1

Because we continually examine ways to improve our products, we reserve the right to alter specifications or discontinue products without prior notice.





Figure 100 Threaded 1000 PSI CWP
Economical Low Pressure Union

Part Number	Size (in.)	Weight Each (lbs.)	Standard Carton
HUT100-2	2	5.29	6
HUT100-3	3	11.60	5
HUT100-4	4	17.75	3
HUT100-6	6	44.40	1
HUT100-8	8	69.90	1



Figure 400 Threaded 4000 PSI CWP
Medium Pressure Union

Part Number	Size (in.)	Weight Each (lbs.)	Standard Carton
HUT400-2	2	11.00	4
HUT400-3	3	19.60	2
HUT400-4	4	29.65	1



Figure 200 Threaded 2000 PSI CWP
General Purpose Union

Part Number	Size (in.)	Weight Each (lbs.)	Standard Carton
HUT200-1	1	1.55	30
HUT200-2	2	4.55	12
HUT200-3	3	11.70	5
HUT200-4	4	19.00	3
HUT200-6	6	44.40	1
HUT200-8	8	71.45	1



Figure 602 Threaded 6000 PSI CWP
Specially Designed Lip Type Elastomer Seal Protects Metal to Metal Sealing Surface and Reduces Line Flow Turbulence

Part Number	Size (in.)	Weight Each (lbs.)	Standard Carton
HUT602-1	1	3.75	4
HUT602-2	2	12.90	4
HUT602-3	3	22.80	2
HUT602-4	4	37.04	1



Figure 206 Threaded 2000 PSI CWP
General Purpose Union With O-Ring in Male Sub for Improved Sealing

Part Number	Size (in.)	Weight Each (lbs.)	Standard Carton
HUT206-2	2	4.60	12
HUT206-3	3	11.80	5
HUT206-4	4	19.10	3
HUT206-6	6	45.00	1
HUT206-8	8	66.00	1



Figure 1002 Threaded 10,000 PSI CWP
Specially Designed Lip Type Elastomer Seal Protects Metal to Metal Sealing Surface and Reduces Line Flow Turbulence

Part Number	Size (in.)	Weight Each (lbs.)	Standard Carton
HUT1002-2	2	12.60	4
HUT1002-3	3	22.60	2
HUT1002-4	4	36.10	1

Because we continually examine ways to improve our products, we reserve the right to alter specifications or discontinue products without prior notice.

Hammer Unions



Figure 602 Butt Weld 6000 PSI CWP

Specially Designed Lip Type Elastomer Seal Protects Metal to Metal Sealing Surface and Reduces Line Flow Turbulence

Part Number	Size (in.)	Weight Each (lbs.)	Standard Carton
HUW602-2	2	13.85	4
HUW602-3	3	26.30	2
HUW602-4	4	37.90	1



Figure 1002 Butt Weld 10,000 PSI CWP

Specially Designed Lip Type Elastomer Seal Protects Metal to Metal Sealing Surface and Reduces Line Flow Turbulence

Part Number	Size (in.)	Weight Each (lbs.)	Standard Carton
HUW1002-2	2	13.95	4
HUW1002-3	3	25.80	2
HUW1002-4	4	37.50	1



Figure 1502 Threaded 15,000 PSI CWP

Specially Designed Lip Type Elastomer Seal Protects Metal to Metal Sealing Surface and Reduces Line Flow Turbulence

Part Number	Size (in.)	Weight Each (lbs.)	Standard Carton
HUT1502-2	2	18.96	2
HUT1502-3	3	27.56	2



Figure 1502 Butt Weld 15,000 PSI CWP

Specially Designed Lip Type Elastomer Seal Protects Metal to Metal Sealing Surface and Reduces Line Flow Turbulence

Part Number	Size (in.)	Weight Each (lbs.)	Standard Carton
HUW1502-2	2	20.00	2
HUW1502-3	3	29.10	2
HUW1502-4	4	78.55	1

Hammer Unions - Barbed



Figure 206 Barbed 300 PSI CWP

Specially Designed Lip Type Elastomer Seal Protects Metal to Metal Sealing Surface and Reduces Line Flow Turbulence

Part Number	Size (in.)	Weight Each (lbs.)	Standard Carton
HUB206-4	4	32.00	1

Because we continually examine ways to improve our products, we reserve the right to alter specifications or discontinue products without prior notice.

NEW
ITEMS



**Round Hole Zinc Plated Steel Strainer
(NPSM Threads)**

Part Number	Size (in.)	Weight Each (lbs.)	Standard Carton
RHS150	1 1/2	1.36	32
RHS200	2	1.78	18
RHS250	2 1/2	2.02	18
RHS300	3	3.08	18
RHS400	4	2.90	18
RHS600	6	6.04	6
RHS800	8	7.34	4
RHS1000	10	26.50	1

NEW
ITEMS



**Square Hole Zinc Plated Steel Strainer
(NPSM Threads)**

Part Number	Size (in.)	Weight Each (lbs.)	Standard Carton
SHS150	1 1/2	1.12	32
SHS200	2	1.74	18
SHS300	3	2.50	18
SHS400	4	2.52	18
SHS600	6	6.32	6
SHS800	8	7.34	4
SHS1000	10	26.50	1

Because we continually examine ways to improve our products, we reserve the right to alter specifications or discontinue products without prior notice.

Cautionary Statement

All Products sold and distributed by Kuriyama of America, Inc. are in the nature of commodities and they are sold by published specifications and not for particular purposes, uses or applications. Purchaser shall first determine their suitability for the intended purposes, uses or applications and shall either conduct its own engineering studies or tests, or retain qualified engineers, consultants or testing laboratories and consult with them before determining the proper use, suitability or propriety of the merchandise or Products for the intended purposes, uses or applications.

Kuriyama of America, Inc. ("Seller") does not recommend the Products for any particular purpose, use or application, and the Purchaser or user thereof shall assume full responsibility for the suitability, propriety, use and application of the Products. Purchaser shall follow all instructions contained in Seller's catalogs, brochures, technical bulletins and other documents regarding the Products. The Products, including but not limited to, hose, tubing or couplings, may fail due to the use or conveyance of substances at elevated or lowered temperatures or at excessive pressure, the conveyance of abrasive, injurious, flammable, explosive or damaging substances.

Hose or tubing used in bent configurations will be subjected to increased abrasion. Hose clamps or couplings may loosen after initial installation and all sections of hose and tubing including connections, couplings, clamps, conductivity and bonding should be inspected frequently, regularly and consistently, and should be replaced, adjusted or re-tightened for the avoidance of leakage, for the prevention of injuries or damages, and for general safety purposes. Except as indicated in its Limited Warranty, Seller shall not be liable or responsible for direct or indirect injuries or damages caused by or attributed to the failure or malfunction of any Products sold or distributed by it.

Purchasers or users of the Products should frequently and consistently undertake inspections and protective measures with respect to the use and application of Products, which should include the examination of tube and cover, conditions of the hose or tubing, and the identification, repair or replacement of sections showing cracking, blistering, separations, internal and external abrasions, leaking or slipped couplings or connections and make proper proof tests.

Limited Warranty

The Products sold or distributed by Seller are warranted to its customers to be free from defects in material and workmanship at the time of shipment by us, subject to the following provisions. ALL WARRANTY CLAIMS SHALL BE MADE WITHIN SIX (6) MONTHS AFTER SELLER SHIPPED THE PRODUCTS. SELLER'S LIABILITY HEREUNDER IS LIMITED AT SELLER'S EXCLUSIVE DISCRETION, TO 1) THE PURCHASE PRICE OF ANY PRODUCTS PROVING DEFECTIVE; 2) REPAIR OF ANY DEFECTIVE PRODUCT OR PART THEREOF; OR 3) REPLACEMENT OF ANY DEFECTIVE PRODUCT OR PART UPON ITS AUTHORIZED RETURN TO SELLER.

THIS WARRANTY IS IN LIEU OF AND EXCLUDES ALL OTHER WARRANTIES, EXPRESSED, IMPLIED, STATUTORY, OR OTHERWISE CREATED UNDER APPLICABLE LAW INCLUDING, BUT NOT LIMITED TO, THE WARRANTY OF MERCHANTABILITY AND THE WARRANTY OF FITNESS FOR A PARTICULAR PURPOSE. IN NO EVENT SHALL SELLER OR THE MANUFACTURER OF THE PRODUCT BELIEVABLE FOR SPECIAL, INCIDENTAL, OR CONSEQUENTIAL DAMAGES, INCLUDING LOSS OF PROFITS, WHETHER OR NOT CAUSED BY OR RESULTING FROM THE NEGLIGENCE OF SELLER AND/OR THE MANUFACTURER OF THE PRODUCT, UNLESS SPECIFICALLY PROVIDED HEREIN. IN ADDITION, THIS WARRANTY SHALL NOT APPLY TO ANY PRODUCTS OR PORTIONS THEREOF WHICH HAVE BEEN SUBJECTED TO ABUSE, MISUSE, IMPROPER INSTALLATION, MAINTENANCE, OR OPERATION, ELECTRICAL FAILURE OR ABNORMAL CONDITIONS, AND TO PRODUCTS WHICH HAVE BEEN TAMPERED WITH, ALTERED, MODIFIED, REPAIRED, REWORKED BY ANYONE NOT APPROVED BY SELLER, OR USED IN ANY MANNER INCONSISTENT WITH THE PROVISIONS OF THE "CAUTIONARY STATEMENT" ABOVE OR ANY INSTRUCTIONS OR SPECIFICATIONS PROVIDED WITH OR FOR THE PRODUCT. 09/2005

Distributed by:



Kuriyama of America, Inc.

Headquarters, Sales Office and Warehouse Location

360 E. State Parkway, Schaumburg, IL 60173-5335

Phone: (847) 755-0360 • Toll-free FAX: (800) 800-0320

International FAX: (847) 885-0996

Web Site: www.kuriyama.com

E-Mail: sales@kuriyama.com



The trademarks contained in this publication are trademarks of Kuriyama of America, Inc.

CONTACT OUR SALES/WAREHOUSE LOCATIONS BELOW WHICH SERVE YOUR AREA

SOUTHWEST WAREHOUSE
KURIYAMA OF AMERICA, INC.
HOUSTON

200 PORTWALL STREET, SUITE 100
HOUSTON, TX 77029

Phone: (713) 674-8212

Toll Free Phone: (800) 501-6808

FAX: (713) 674-5214

Toll Free FAX: (800) 800-5214

WESTERN WAREHOUSE
KURIYAMA OF AMERICA, INC.

SANTA FE SPRINGS

10749 SHOEMAKER AVENUE

SANTA FE SPRINGS, CA 90670-4039

Phone: (562) 941-4507

FAX: (562) 941-8940

Toll-Free FAX: (800) 326-8940

SOUTHEAST WAREHOUSE
FORTNEY SALES CO., INC.

4221 CANTRELL ROAD NW

ACWORTH, GA 30101

Phone: (770) 427-6528

FAX: (770) 423-9249

Toll Free FAX: (800) 423-9249

Web Site: www.fortneysales.com

E-Mail: sales@fortneysales.com

EASTERN WAREHOUSE
EASTERN RUBBER & PLASTICS CO., INC.

100 GOLDMAN DR.

PLUMSTED INDUSTRIAL PARK

CREAM RIDGE, NJ 08514

Phone: (609) 758-0100

FAX: (609) 758-0102

Toll Free FAX: (800) 445-7138

Web Site: www.easternrubber.com

E-Mail: sales@easternrubber.com

IN MEXICO:

KURIYAMA DE MÉXICO S DE RL DE CV
AV JOSE PALOMO MARTINEZ NO 520-20
BODEGA 5

PARQUE INDUSTRIAL OMOLAP

APODACA, N.L. CP: 66633, MEXICO

Telefonos: (81) 1086-1870 0 71

Lada sin Costo 01-800-822-52-00

FAX: (81) 1086-1869

Internet: www.kuriyama.com

Correo Electronico: ventas@kuriyama.com



Visit us
www.kuriyama.com
on the Web!